



42 Ottershaw Gardens, Blackburn, BB1 8RG

£850

42 Ottershaw Gardens, Blackburn BB1 8RG

Nestled in the charming Ottershaw Gardens of Blackburn, this delightful detached bungalow offers a perfect blend of comfort and convenience. With three well-proportioned bedrooms, this property is an ideal family home, providing ample space for both relaxation and entertaining.

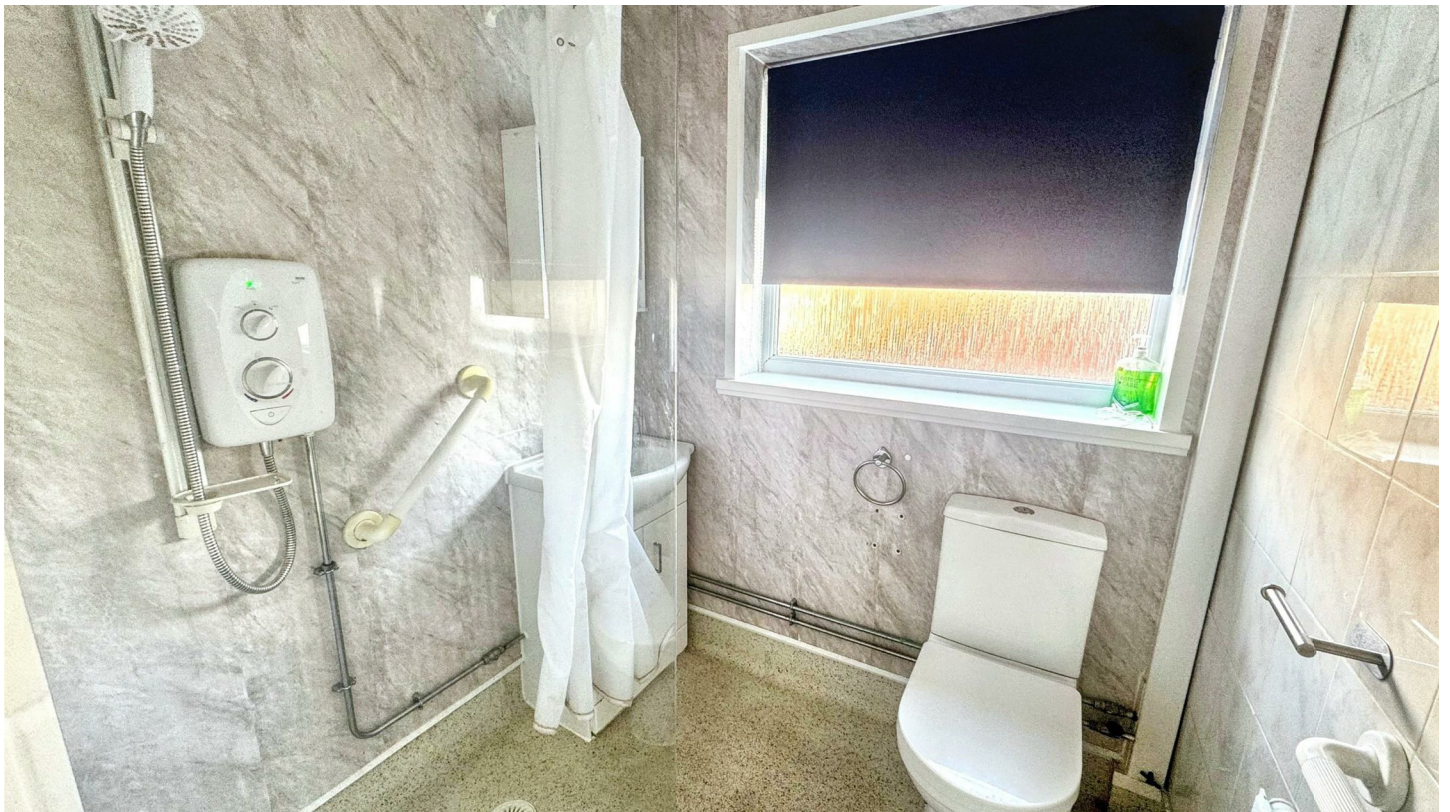
Spanning 732 square feet, the bungalow features a modern bathroom equipped with a walk-in shower, ensuring ease of access and comfort for all family members. The layout is thoughtfully designed to maximise space and light, creating a warm and inviting atmosphere throughout.

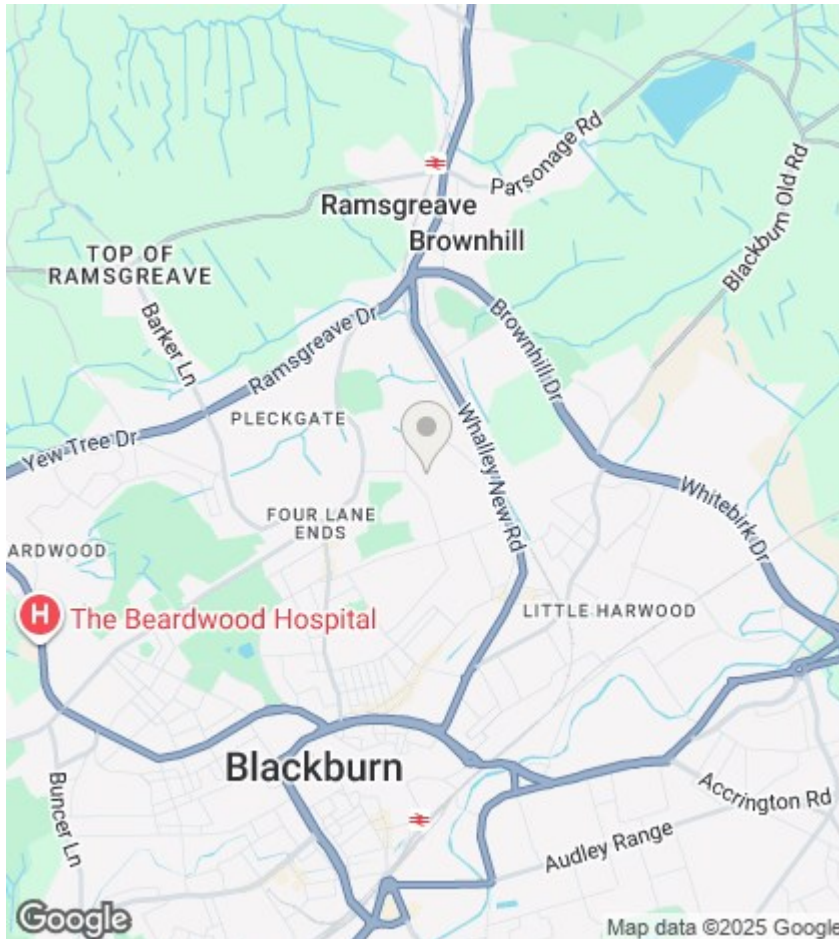
The exterior of the property boasts off-street parking, with a driveway that leads to a garage, providing secure storage and additional convenience. The surrounding area is peaceful, making it a wonderful retreat from the hustle and bustle of daily life.

Built in 1980, this bungalow combines classic charm with modern living, making it a fantastic opportunity for those seeking a home that is both practical and inviting. Whether you are a growing family or looking to downsize, this property is sure to meet your needs. Don't miss the chance to make this lovely bungalow your new home in Blackburn.



Council Tax Band: A





Directions

Viewings

Viewings by arrangement only. Call 01254 449034 to make an appointment.

EPC Rating:

Energy Efficiency Rating		
	Current	Potential
Very energy efficient - lower running costs		
(92 plus) A		
(81-91) B		
(69-80) C		
(55-68) D		
(39-54) E		
(21-38) F		
(1-20) G		
Not energy efficient - higher running costs		
England & Wales	EU Directive 2002/91/EC	

